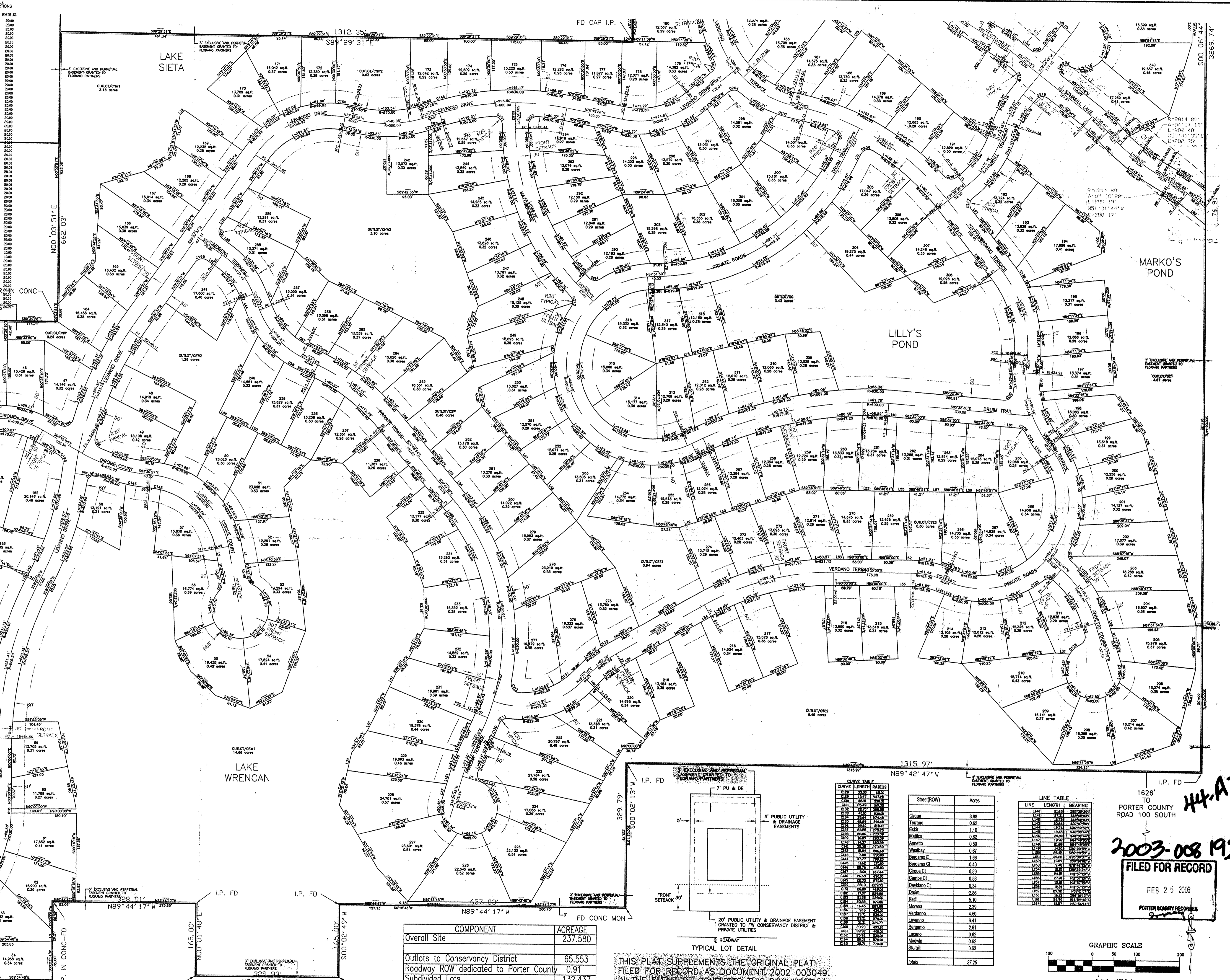


CURVE TABLE with columns for CURVE, LENGTH, RADIUS. Lists curve data for various sections of the plat.

LINE TABLE with columns for LINE, LENGTH, BEARING. Lists line data for various sections of the plat.



Michael J. Cap Ltd. Professional Consulting Engineers 18154 Harwood Avenue, Suite 204 Homewood, Illinois 60430 708-957-5774 708-798-1294

REVISIONS table with columns for DATE, BY, DESCRIPTION. Lists revisions 1-5.



FALLING WATERS-CENTRAL PLAT OF AMENDMENTS, CLARIFICATIONS, AND ADDITIONAL INFORMATION PORTER COUNTY, INDIANA

44-A4

2003-008 192 FILED FOR RECORD

FEB 25 2003 PORTER COUNTY RECORDER

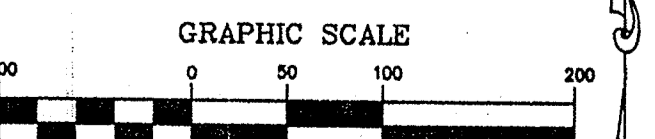


Table with columns for Street(ROW) and Acres. Lists streets like Circle, Tettano, Edie, Mattie, Annetta, Westbay, Bergamo E, Bergamo Ct, Corque Ct, Cambie Ct, Davidsen Ct, Daim, Moena, Vandemo, Lucarno, Bergamo, Lucano, Madwin, Stullig.

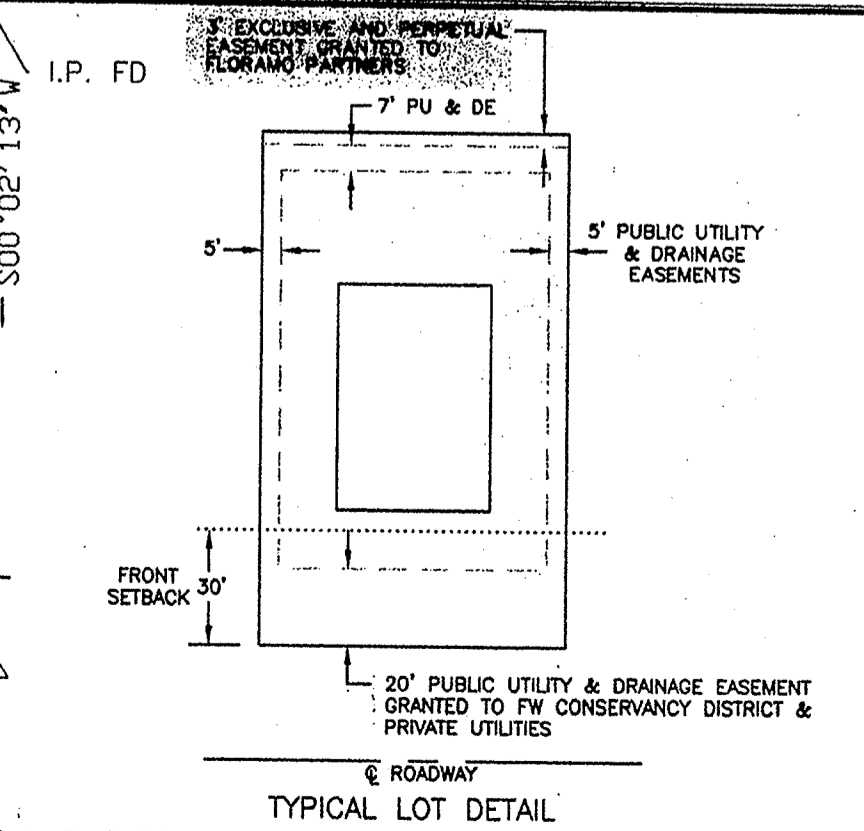


Table with columns for COMPONENT and ACRES. Lists Overall Site (237.580), Outlots to Conservancy District (65.553), Roadway ROW dedicated to Porter County (0.91), Subdivided Lots (132.437), Right of Way of Private Roads (37.25).

THIS PLAT SUPPLEMENTS THE ORIGINAL PLAT FILED FOR RECORD AS DOCUMENT 2002 003049 IN THE EVENT OF CONFLICTS THIS DOCUMENT WILL TAKE PRECEDENCE AND WILL GOVERN