

R.O.W. AREAS

MICALA DRIVE: 0.91 ACRES  
KETILL COURT: 0.54 ACRES  
DEDICATION OF DIVISION ROAD: 0.46 ACRES

REDUCTION OF AREA PREVIOUSLY PLATTED  
KETILL TRACE R.O.W.: 0.90 ACRES

42-B-6-A

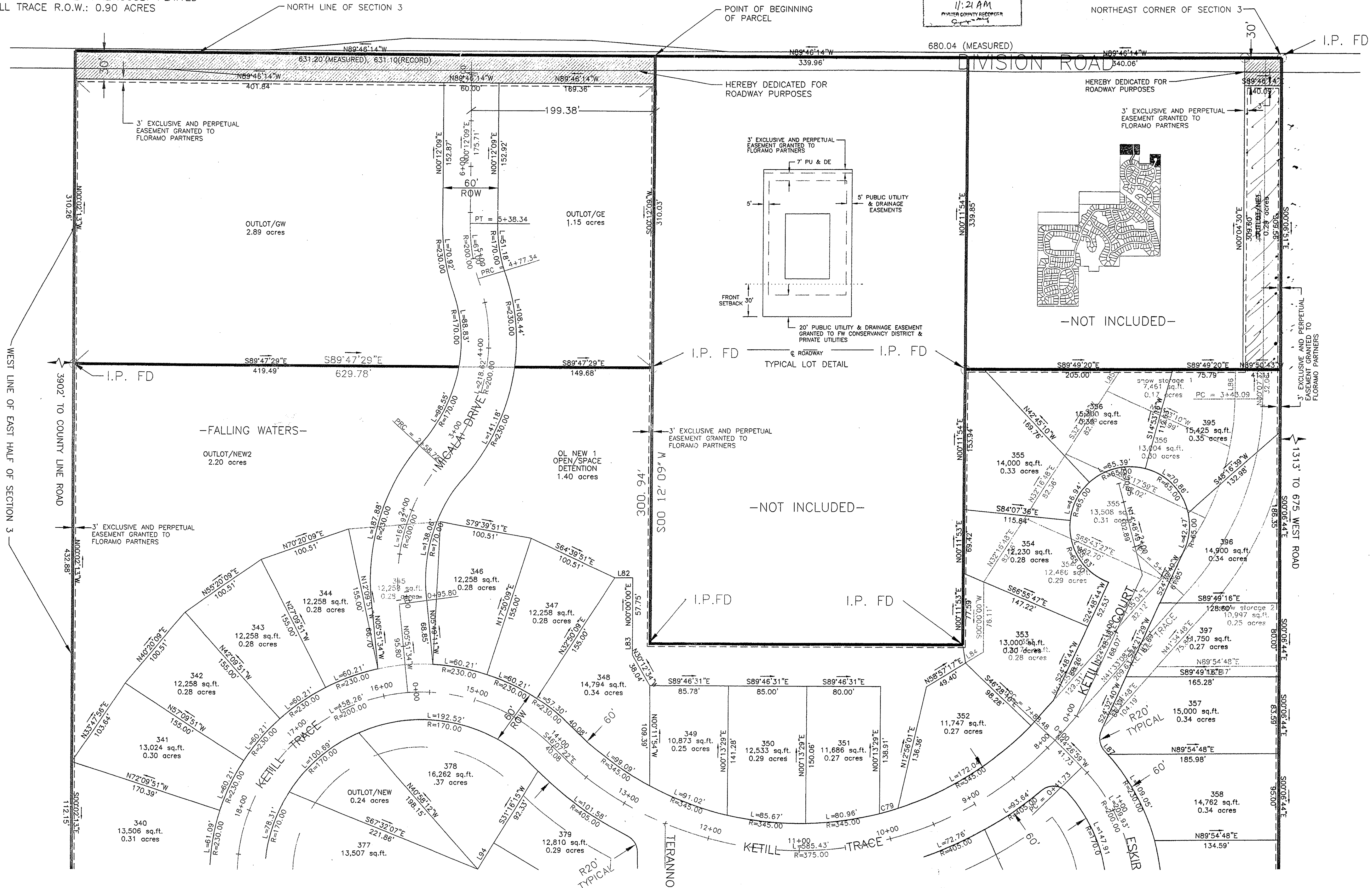
PLAT OF FIRST RESUBDIVISION (LOTS 345, 353 THRU 357 INCLUSIVE,  
SNOW STORAGE 1 AND 2 AND PART OF KETILL TRACE NORTH EAST OF ESKIR)  
AND PLAT OF FIRST ADDITION AT NORTH ENTRANCE  
OF FALLING WATERS

2003-010753  
FILED FOR RECORD

MAR 13 2003  
11:21 AM  
PORTER COUNTY RECORDER

FILED FOR TAXATION SUBJECT TO  
FINAL ACCEPTANCE FOR TRANSFER  
MAR 13 2003  
AUDITOR PORTER COUNTY

ROADS WILL BE BUILT TO  
STANDARDS OF PORTER COUNTY  
BUT WILL REMAIN PRIVATE



Michael J. Cap Ltd.  
Professional Consulting Engineers  
18154 Harwood Avenue, Suite 204  
Homewood, Illinois 60430  
708-957-5774 708-198-1254  
© 2001

REVISIONS:

3.10.03	PC AUDITOR
---------	------------



FALLING WATERS  
PORTER COUNTY, INDIANA

Date: 10-01-01  
Scale: 1"=50'  
Drawn: DMS  
Checked: MJC  
Sheet: 1 of 2  
DWG: "GUIDO"